

Polyester Inspiration

Autumn
Broken Twill Weave
Guest
Reflect
Sone
Sport
Steelcut Beat

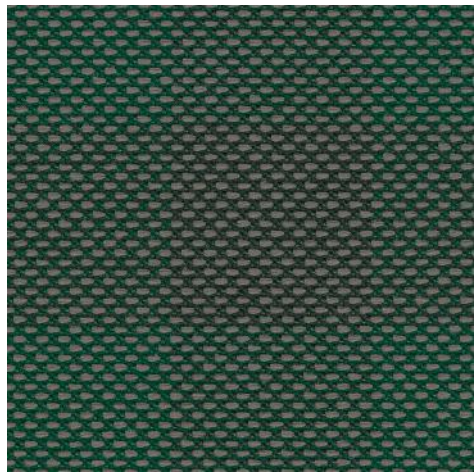




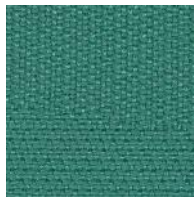
Polyester is a technical fibre characterised by flexibility, durability, and unique colour properties. It is hard wearing and easy to clean and maintain, offering a solution that is ideal for high-traffic applications.

In keeping with our belief that longevity is at the core of sustainable design, our polyester textiles are made using only the best raw materials so that they are made to last and have the least possible impact on the environment. To ensure this, we produce most of our polyester textiles in Europe with our own weaving mills. Proximity to our production gives us tighter control on emissions, waste and resource use.

[Discover more here.](#)



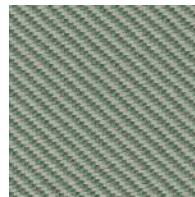
Steelcut Beat
955



Sone
947



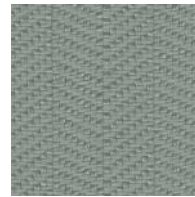
Sport
923



Reflect
924



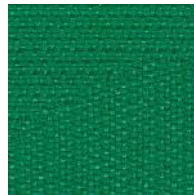
Broken Twill Weave
976



Broken Twill Weave
826



Autumn
971



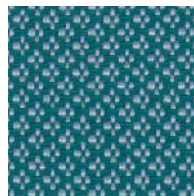
Sone
957



Sport
943



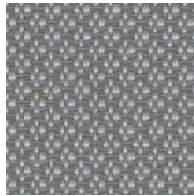
Autumn
331



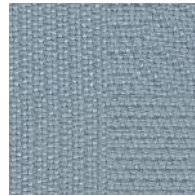
Sport
823



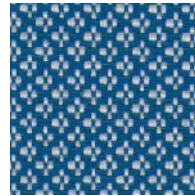
Steelcut Beat
175



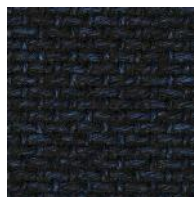
Sport
123



Sone
927



Sport
713



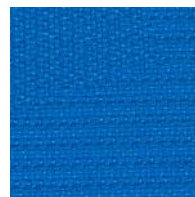
Autumn
791



Guest
760



Broken Twill Weave
746



Sone
757



Sport
743



Sone
767



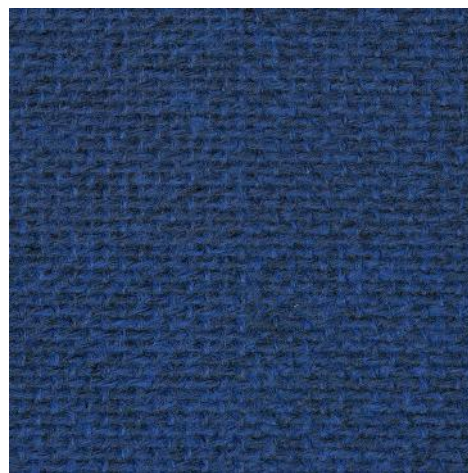
Sone
117



Autumn
751



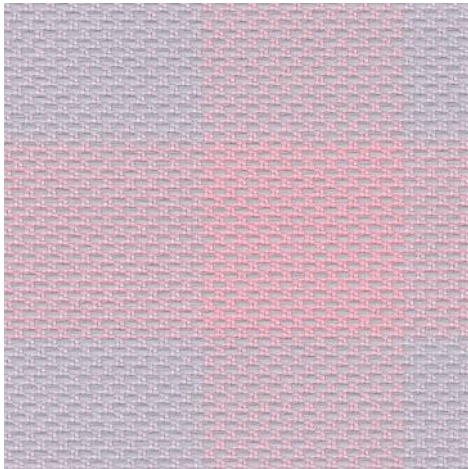
Sport
183



Autumn
771



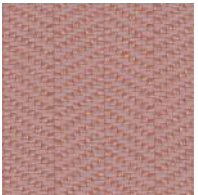
Autumn, Photo by Casper Seirsen



Steelcut Beat
615



Reflect
614



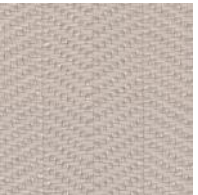
Broken Twill Weave
626



Sone
517



Broken Twill Weave
646



Broken Twill Weave
216



Broken Twill Weave
126



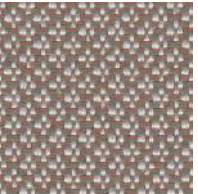
Reflect
124



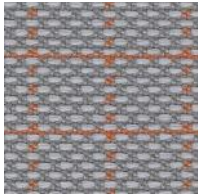
Autumn
101



Steelcut Beat
115



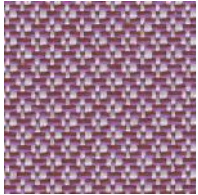
Sport
213



Steelcut Beat
135



Sone
137



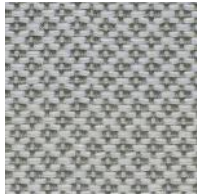
Sport
613



Broken Twill Weave
116



Guest
120



Sport
113



Autumn
131



Autumn
651



Autumn
191



Autumn
171



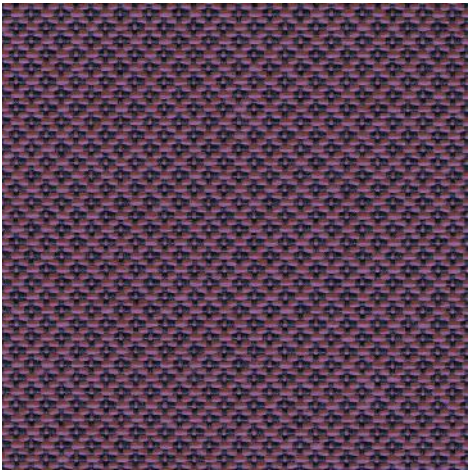
Sone
397



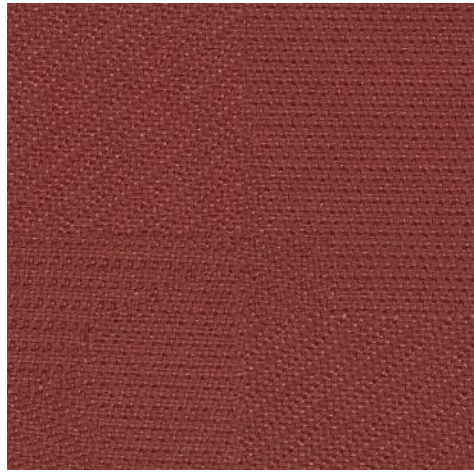
Sone
197



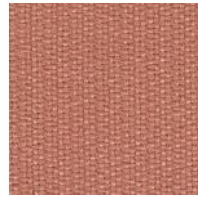
Guest
190



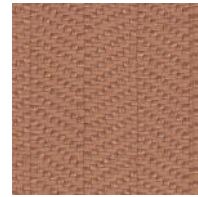
Sport
643



Sone
567



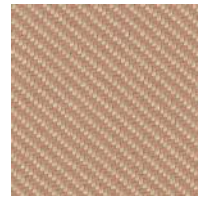
Sone
547



Broken Twill Weave
336



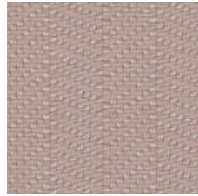
Autumn
681



Reflect
224



Guest
560



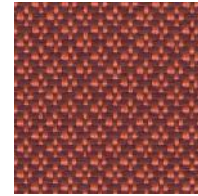
Broken Twill Weave
616



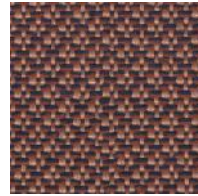
Steelcut Beat
215



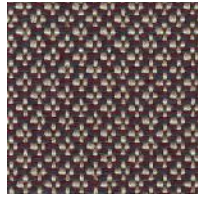
Steelcut Beat
225



Sport
543



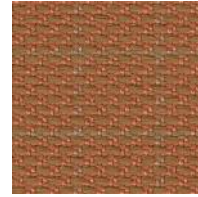
Sport
553



Sport
243



Autumn
551



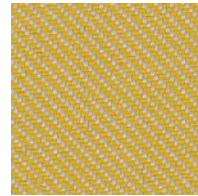
Steelcut Beat
355



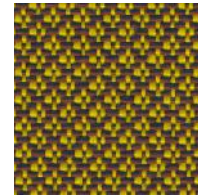
Broken Twill Weave
376



Steelcut Beat
105



Reflect
434



Sport
443



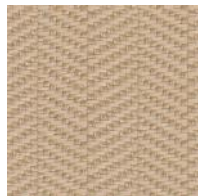
Autumn
361



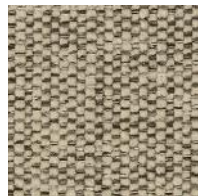
Autumn
221



Broken Twill Weave
446



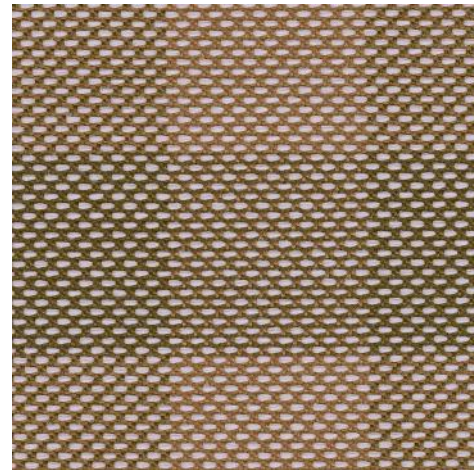
Broken Twill Weave
226



Guest
210



Sport
253



Steelcut Beat
325



Autumn

Designed by Teruhiro Yanagihara
100% recycled polyester
Direction: ⇔
Width: approx. 140cm (55")
Abrasion: 50,000 Martindale
Click here for full Technical Specifications.

Broken Twill Weave

Designed by Jonathan Olivares
100% post-consumer recycled polyester
Direction: ⇔
Width: approx. 140cm (55")
Abrasion: 95,000 Martindale
Click here for full Technical Specifications.

Guest

Designed by Louise Sigvardt
100% recycled polyester (PET)
Direction: ⬆
Width: approx. 140 cm (55")
Abrasion: 100,000 Martindale
Click here for full Technical Specifications.

Reflect

Designed by Patricia Urquiola
100% post-consumer recycled polyester
Direction: ⬆
Width: approx. 140cm (55")
Abrasion: 100,000 Martindale
Click here for full Technical Specifications.

Sone

Designed by Ronan Bouroullec
100% post-consumer recycled polyester
Direction: ⇔
Width: approx. 140cm (55")
Abrasion: 40,000 Martindale
Click here for full Technical Specifications.

Sport

Designed by Patricia Urquiola
100% ocean-bound polyester
Direction: ⬆
Width: approx. 140cm (55")
Abrasion: 40,000 Martindale
Click here for full Technical Specifications.

Steelcut Beat

Designed by Giulio Ridolfo
100% post-consumer recycled polyester
Direction: ⬆
Width: approx. 140cm (55")
Abrasion: 100,000 Martindale
Click here for full Technical Specifications.

*Please note the variation of the repeats for the colourways of Steelcut Beat. See next page.



Vertical: 1 cm / 0.4" (approx.)
Horizontal: 1 cm / 0.4" (approx.)



Vertical: 6.5 cm / 2.6" (approx.)
Horizontal: 6.5 cm / 2.6" (approx.)

Repeat size cm of Steelcut Beat (approx.)

Colour	Vertical	Horizontal
105	1 cm	1 cm
115	1 cm	1 cm
135	1 cm	1 cm
175	1 cm	1 cm
215	6.5 cm	6.5 cm
225	1 cm	1 cm
325	6.5 cm	6.5 cm
335	6.5 cm	6.5 cm
345	6.5 cm	6.5 cm
355	1 cm	1 cm
375	6.5 cm	6.5 cm
395	1 cm	1 cm
545	6.5 cm	6.5 cm
615	6.5 cm	6.5 cm
645	6.5 cm	6.5 cm
655	6.5 cm	6.5 cm
775	6.5 cm	6.5 cm
785	1 cm	1 cm
955	6.5 cm	6.5 cm
965	1 cm	1 cm
995	1 cm	1 cm

Repeat size " of Steelcut Beat (approx.)

Colour	Vertical	Horizontal
105	0.4"	0.4"
115	0.4"	0.4"
135	0.4"	0.4"
175	0.4"	0.4"
215	2.6"	2.6"
225	0.4"	0.4"
325	2.6"	2.6"
335	2.6"	2.6"
345	2.6"	2.6"
355	0.4"	0.4"
375	2.6"	2.6"
395	0.4"	0.4"
545	2.6"	2.6"
615	2.6"	2.6"
645	2.6"	2.6"
655	2.6"	2.6"
775	2.6"	2.6"
785	0.4"	0.4"
955	2.6"	2.6"
965	0.4"	0.4"
995	0.4"	0.4"

10^{year}
warranty

Quality and environmental system accreditation according to ISO 9001 and ISO 14001.

Contact and further information www.kvadrat.dk

US contact info: 1-800-620-9309

10^{year}
warranty

Quality and environmental system accreditation according to ISO 9001 and ISO 14001.

Contact and further information www.kvadrat.dk

US contact info: 1-800-620-9309