



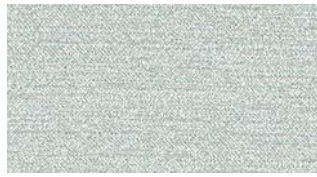
COATED FABRICS
INTERACTIVE CARD

G R C ●

Stinson®



Terra
TRA27



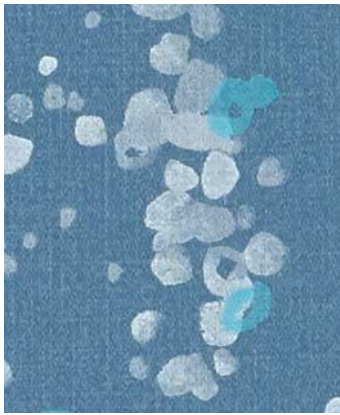
Nishiki 2.0
NIH256



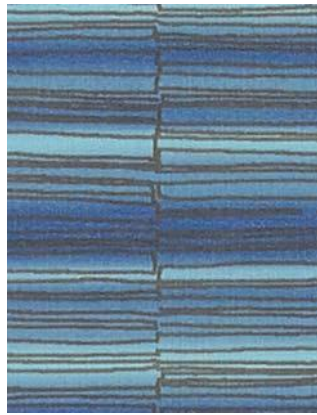
Winnly
WNL16



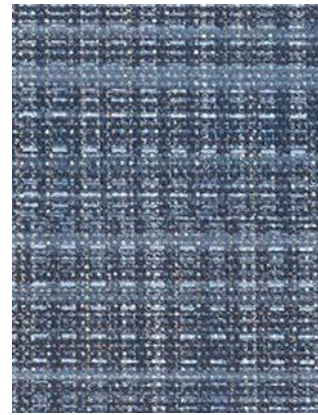
Petal Dots
PDO55



Pebble Trail
PBT16



Frequency 2.0
FRQ226



Strand
STR11



Weft
WEF21



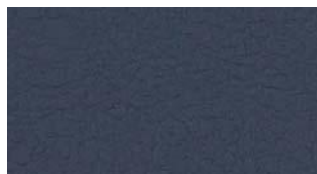
Lara
LRA89



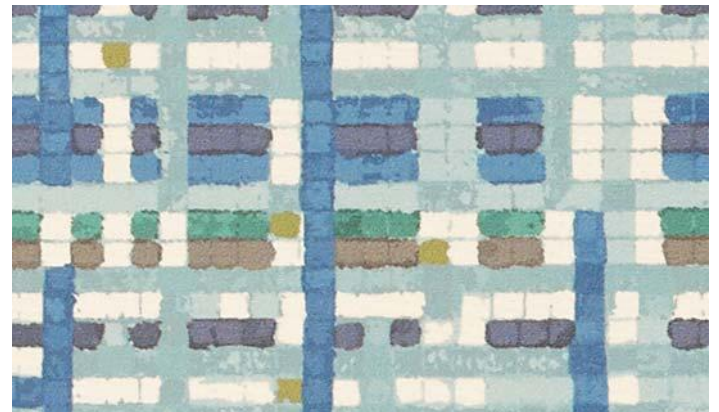
Stallion
SLN29



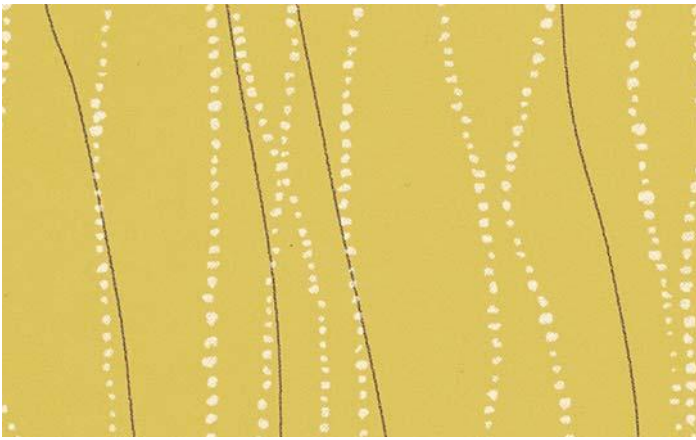
Ardent
ARD28



Alamo
ALM34



Watercolor Grid
WTG25



Effervescence • Effervescence 2.0
EFF10



Clean Slate 2.0
CLN234



Fuse 2.0
FSE227



Tessuto 2.0
TES227



Flanders
FLA65



Tinker
TKR12



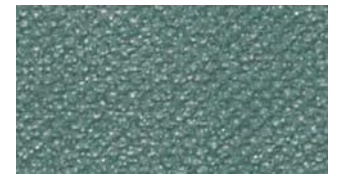
Watercolor Grid
WTG26



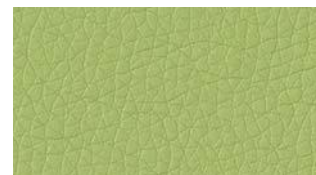
Vector
VEC15



Terra
TRA28



Runway
RUN64



Staple
STP65



Tilt
TIL59



Cassidy 2.0
CAS255



Alamo
ALM35



Frequency 2.0
FRQ220



Box Chain
BXC50



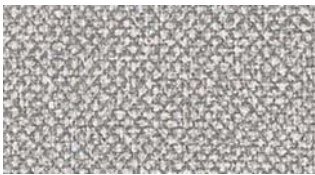
Terra
TRA23



Hopsack
HOP10



Oxford 2.0
OXF201



Oxford 2.0
OXF228



Flanders
FLA54



Satchel
SAT14



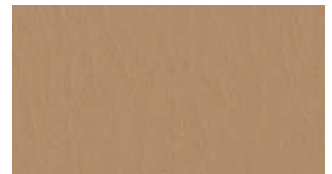
Alamo
ALM11



Criss Cross 2.0
CRS276



Moccasin 2.0
MOC216



Lara
LRA75



Flanders
FLA63



Didi
DID67



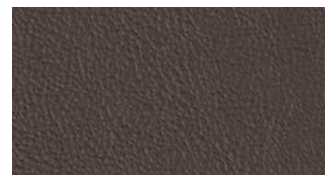
Connect 2.0
CNN230



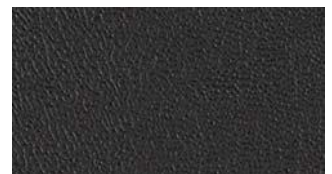
Bandwidth
BDW53



Pebble Trail
PBT13



Ardent
ARD32



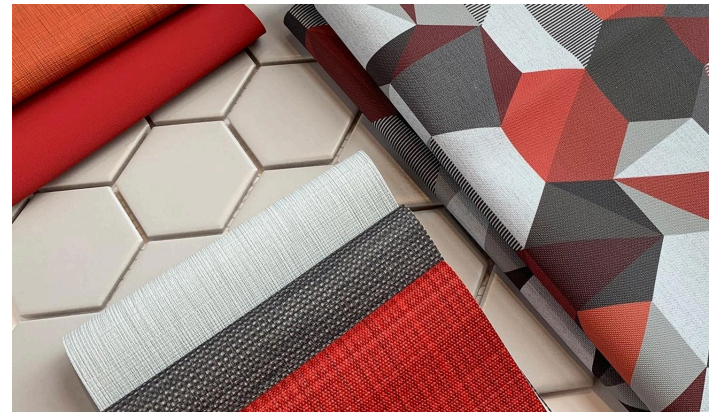
Core 2.0
CRE271



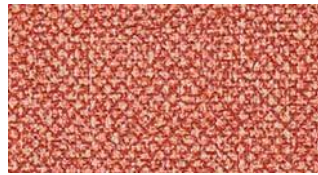
Lara
LRA78



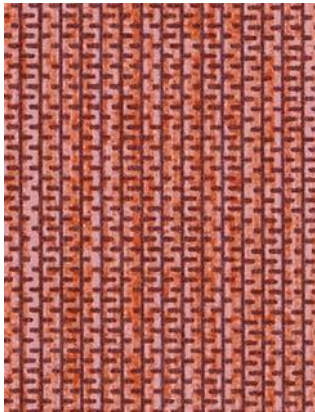
Terra
TRA31



Nishiki 2.0
NIH276



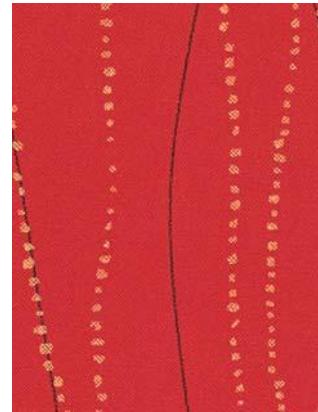
Oxford 2.0
OXF224



Box Chain
BXC59



Flanders
FLA67



Effervescence • Effervescence 2.0
EFF214



Criss Cross 2.0
CRS248



Core 2.0
CRE253



Etch
ETC30



Scout • Scout 2.0
SCO48



Alamo
ALM27



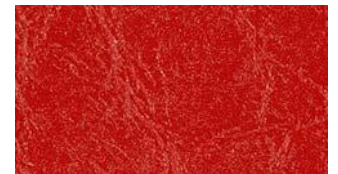
Fuse 2.0
FSE231



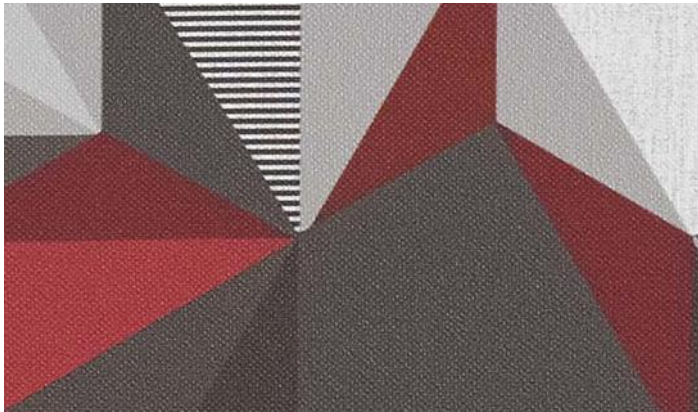
Hopsack
HOP18



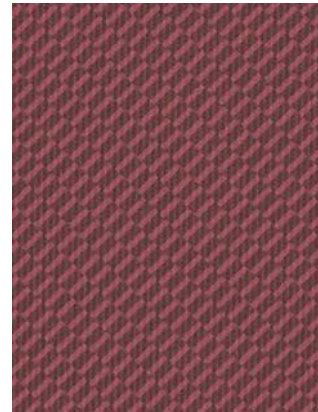
Lara
LRA67



Sleek 2.0
SLK221



Polygon
POL16



Tilt
TIL63



Stride
STI64



Gabby
GAB26

PERFORMANCE FEATURES

- Extreme durability 100,000+ DR
- GREENGUARD Gold Certified
- Moisture barrier
- Advanced soil + stain protection
- Bleach-solution cleanable
- Resistant to harsh disinfectants*

*Visit cfstinson.com for specific care guides and disinfectant compatibility.



The UL GREENGUARD Gold Certification includes health-based criteria for limiting emissions of more than 360 VOCs and total chemical emissions, to ensure that products are acceptable for use in environments such as schools and healthcare facilities.



To order memo samples:
samples@cfstinson.com | (800) 841-6279 | cfstinson.com

Stinson[®]