

Camira Natural Fibre Textile Card

camira



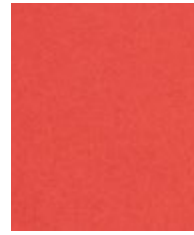
Magdalene
CUZ21



Wellington
CUZ13



Oriel
CUZ18



Leicester
CUZ4N



Leeds
CUZ4R



Moreton
CUZ3W



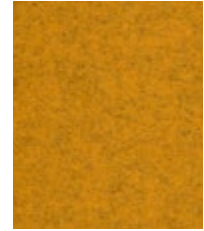
Handcross
CUZ63



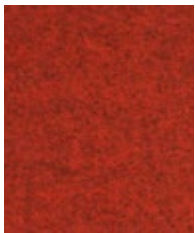
Goldsmith
CUZ39



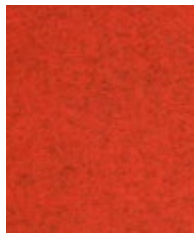
Felsted
CUZ3S



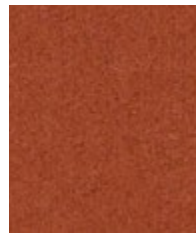
Wesley
CUZ82



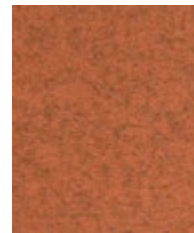
Edge Hill
CUZ90



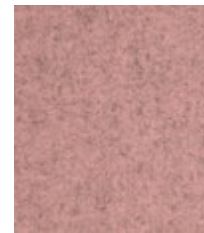
Tonbridge
CUZ3Q



Uplands
CUZ4U



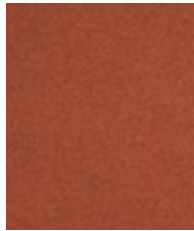
Malvern
CUZ3L



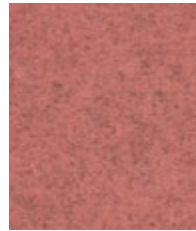
Earlscliffe
CUZ3T



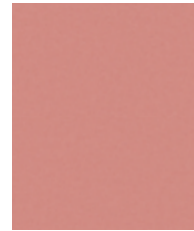
Dunalk
CUZ4D



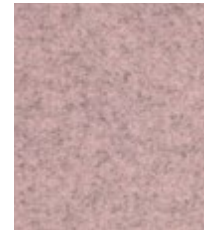
Warwick
CUZ4L



Ackworth
CUZ3P



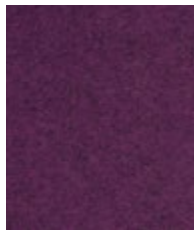
Derby
CUZ4Q



Padworth
CUZ3N



Sidcot
CUZ3V



Holyoke
CUZ2T



Chichester
CUZ3C



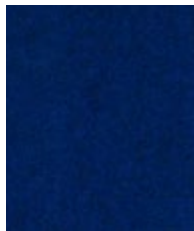
Moorlands
CUZ4T



Falmouth
CUZ4M



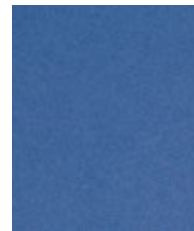
Oxford
CUZ09



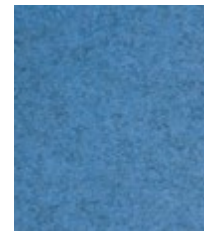
Tettenhall
CUZ3X



Ellesmere
CUZ3Z



Manchester
CUZ1V

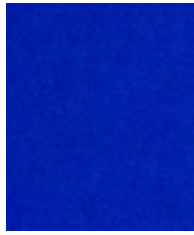


Perth
CUZ4H

Visit www.camirafabrics.com to view the full range of colors available in each pattern.
Photographic fabric scans are not color accurate. Always request actual fabric samples before ordering.



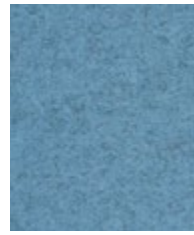
Edinburgh
CUZ1Y



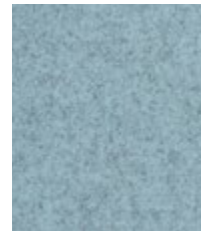
Dundee
CUZ4P



Newcastle
CUZ1W



Norland
CUZ4J



Plymouth
CUZ1R



Glenalmond
CUZ62



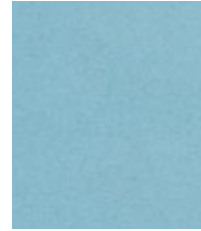
Knightsbridge
CUZ26



Vassar
CUZ2U



Aston
CUZ02



Woodcroft
CUZ2Z



Hull
CUZ1P



Brokenhurst
CUZ4B



Abertay
CUZ3B



Latymer
CUZ33



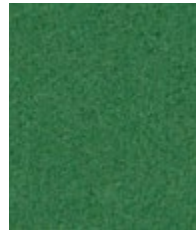
Ullswater
CUZ4S



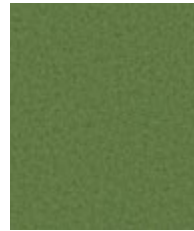
Bodmin
CUZ4F



Montcrest
CUZ3A



Heathfield
CUZ4V



Kingham
CUZ3U



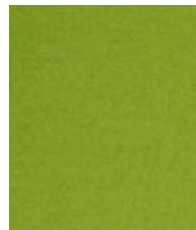
Moray
CUZ4K



Cardiff
CUZ1N



Ambleside
CUZ4G



Bryanston
CUZ53



Newport
CUZ1L



Eynesbury
CUZ2W



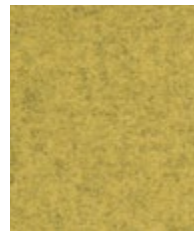
Oakham
CUZ3Y



Camphill
CUZ1K



Ulster
CUZ1F

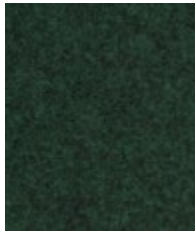


Dunhurst
CUZ58



Lucton
CUZ3M

Visit www.camirafabrics.com to view the full range of colors available in each pattern.
Photographic fabric scans are not color accurate. Always request actual fabric samples before ordering.



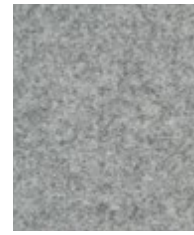
Grantham
CUZ4E



Stowe
CUZ3R



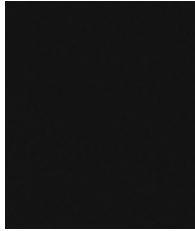
Aberlour
CUZ1J



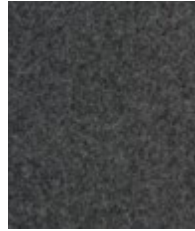
Surrey
CUZ1E



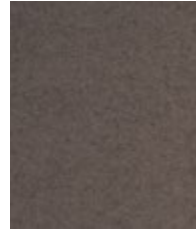
Silverdale
CUZ28



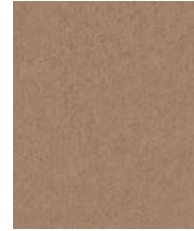
Napier
CUZ08



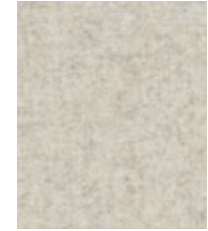
Silcoates
CUZ30



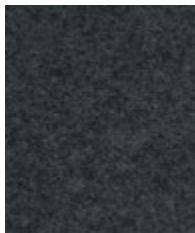
Trevelyan
CUZ31



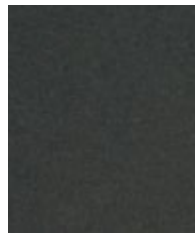
Bristol
CUZ4X



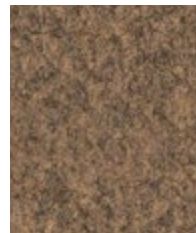
Dartmouth
CUZ2Q



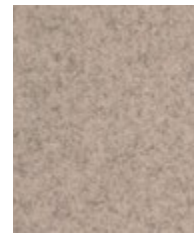
Bromsgrove
CUZ35



Winchester
CUZ12



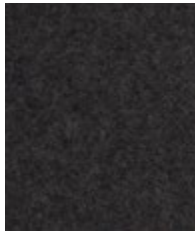
Caterham
CUZ4A



St Andrews
CUZ86



Fairfield
CUZ47



Kingsmead
CUZ67



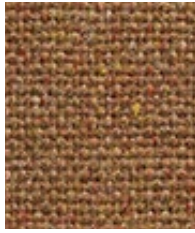
Stonebridge
CUZ4W

Made from premium New Zealand lambswool, Blazer is a timeless wool felt fabric which embodies everything we do: we spin the yarn, weave the cloth, mill the fabric and dye it into our most extensive palette of 77 colorways.

Sustainable, natural,
renewable.



Renewable
Pure New Wool



Perivale
MLF59



Bank
MLF23



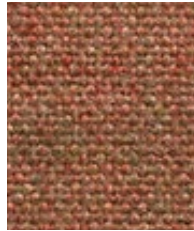
Upminster
MLF20



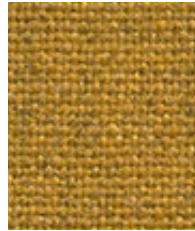
Morden
MLF12



Barking
MLF45



Alperton
MLF43



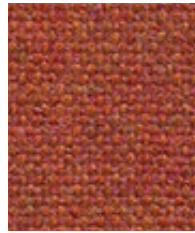
Tooting
MLF17



Blackwall
MLF46



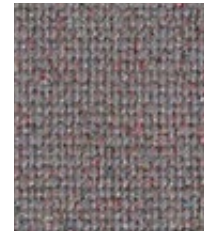
Parsons
MLF14



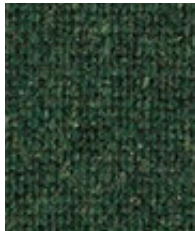
Balham
MLF44



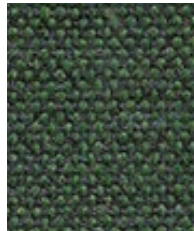
Barbican
MLF03



Brixton
MLF47



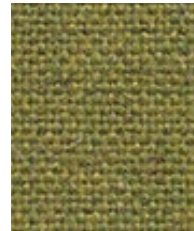
Hornchurch
MLF55



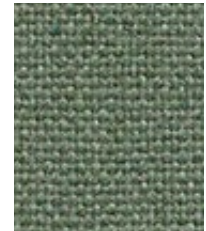
Greenford
MLF32



Moorgate
MLF57



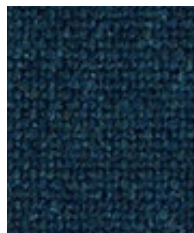
Woodford
MLF67



Greenwich
MLF52



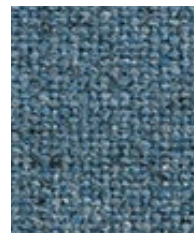
Tower
MLF36



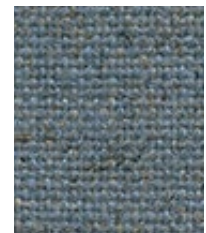
Embankment
MLF50



Clapham
MLF49



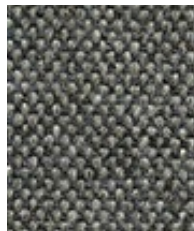
Epping
MLF51



Waterloo
MLF21



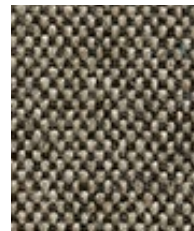
Edgware
MLF28



Watford
MLF65



Richmond
MLF62



Shadwell
MLF63



Redbridge
MLF61

Visit www.camirafabrics.com to view the full range of colors available in each pattern.
Photographic fabric scans are not color accurate. Always request actual fabric samples before ordering.



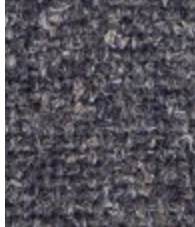
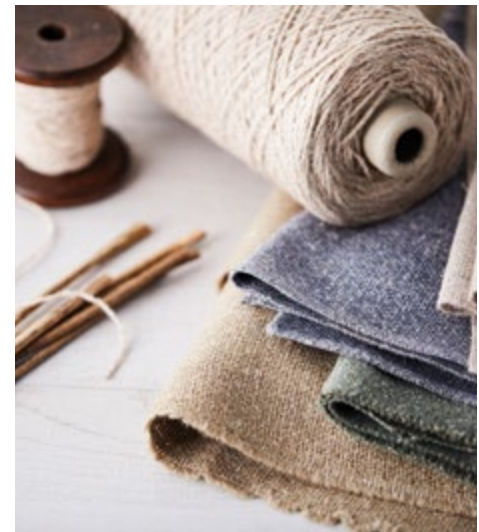
Grain
HWP27



Bale
HWP02



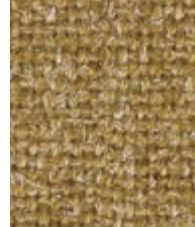
Oat
HWP05



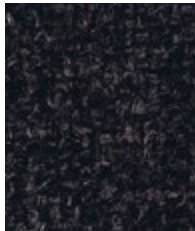
Root
HWP06



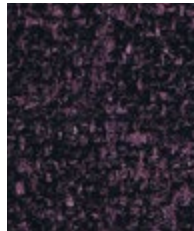
Seed
HWP13



Gorse
HWP03



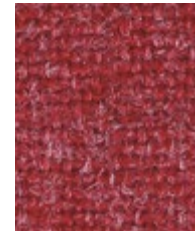
Sickle
HWP10



Hedegrow
HWP09



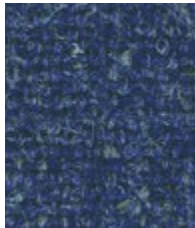
Heath
HWP07



Alec
HWP12



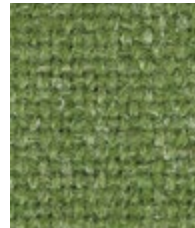
Pollen
HWP08



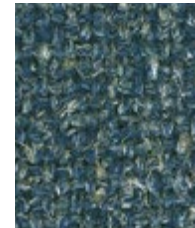
Ashworth
HWP26



Hectare
HWP21



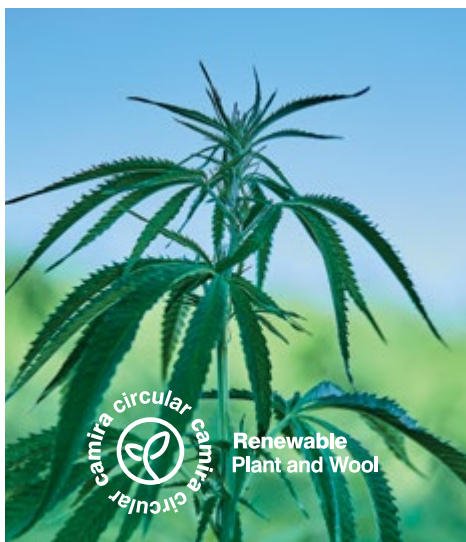
Acre
HWP19



Trough
HWP20



Dale
HWP18



Plant-based, eco-friendly, sustainable,
and naturally flame-retardant.

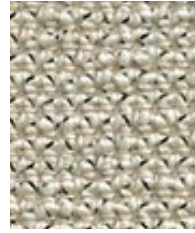
Expertly woven from a blend of wool and hemp, Hemp is a fabric of natural beauty. With a soft handle and inherent flame retardancy, this sustainable textile has a classic plain weave that perfectly showcases its natural composition and multi-tonal coloration.



Settle
UDA36



Kidstone
UDA02



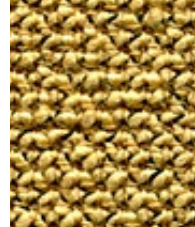
Goredale
UDA29



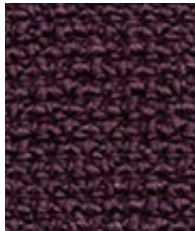
Kettlewell
UDA33



Horton
UDA30



Simonstone
UDA05



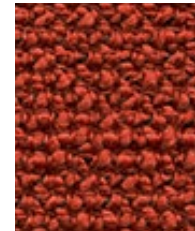
Swaledale
UDA38



Skipton
UDA37



Sedbusk
UDA14



Walden
UDA13



Askrigg
UDA03



Gayle
UDA08



Malham
UDA34



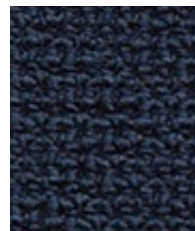
Ingleton
UDA32



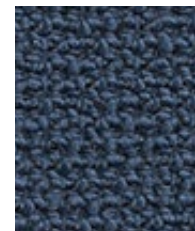
Bronte
UDA28



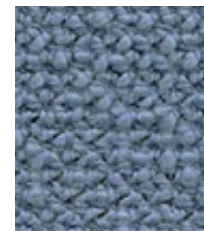
Grassington
UDA27



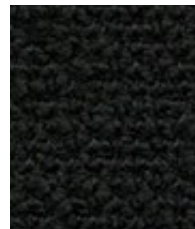
Marsden
UDA35



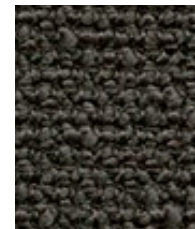
Malham
UDA34



Dacre
UDA21



Buckden
UDA01



Leyburn
UDA25



Hadraw
UDA04

Visit www.camirafabrics.com to view the full range of colors available in each pattern. Photographic fabric scans are not color accurate. Always request actual fabric samples before ordering.

Blazer

Composition

100% Pure New Wool

Environmental

Certified to the EU Ecolabel
Certified to Indoor Advantage™ Gold
Environmental Product Declaration - Natural fabric
AB 2998 Compliant
Prop 65 Compliant
PFAS Free

Width

54 inches minimum

Abrasion Resistance*

ASTM D4157 Wyzenbeek method
Heavy Duty Upholstery independently certified to $\geq 75,000$ double rubs
Covered by a full and comprehensive 10 year guarantee (full details available)

Flammability

California Technical Bulletin 117
NFPA 260 + UFAC Class 1
BS 7176 Low Hazard
ASTM E84 Class 1 or A (Adhered)
ASTM E84 Class 1 or A (Un-adhered)
IMO FTP Code (Part 8)

Optional, please specify when ordering:

NFPA 701 when FR treated

Note: Flammability performance is dependent on components used.

Cleaning code

W/S

Clean with water-based cleaning agent or solvent: Depending on the stain, you can use a dry-cleaning solvent, the foam of a mild detergent, or upholstery shampoo.

Hemp

Composition

70% Pure New Wool, 30% Hemp

Environmental

Certified to the EU Ecolabel
Certified to Indoor Advantage™ Gold
Environmental Product Declaration - Natural fabric
AB 2998 Compliant
Prop 65 Compliant
PFAS Free
Rapidly renewable and compostable
Contains wool and bast fiber
Non metallic dyestuffs

Width

54 inches minimum

Abrasion Resistance*

ASTM D4157 Wyzenbeek method
Heavy Duty Upholstery independently certified to $\geq 47,500$ double rubs
Covered by a full and comprehensive 10 year guarantee (full details available)

Flammability

California Technical Bulletin 117
NFPA 260 + UFAC Class 1
BS 7176 Medium Hazard

Note: Flammability performance is dependent on components used.

Cleaning code

W/S

Clean with water-based cleaning agent or solvent: Depending on the stain, you can use a dry-cleaning solvent, the foam of a mild detergent, or upholstery shampoo.

*Abrasion test results exceeding ACT performance Guidelines are not an indicator of product lifespan. Multiple factors affect fabric durability and appearance retention. We're confident in the durability of our products so we provide a robust 10 year guarantee (full details available). This product is externally certified, details of which are on our website and available from our customer services team.

Batch to batch variations in shade may occur within commercial tolerances. We reserve the right to alter technical specifications without notice. The Unregistered Design Rights and the Copyright in all designs are the exclusive property of Camira Fabrics Limited.

The stated technical and environmental performance of a fabric may be affected by the post treatment applied. Product guarantees for the post treatment of fabrics undertaken by Camira are guaranteed for 5 years.

Main Line Flax

Composition

75% Pure New Wool, 25% Flax

Environmental

Certified to the EU Ecolabel
Certified to Indoor Advantage™ Gold
Environmental Product Declaration - Natural fabric
AB 2998 Compliant
Prop 65 Compliant
PFAS Free

Width

54 inches minimum

Abrasion Resistance*

ASTM D4157 Wyzenbeek method
Heavy Duty Upholstery independently certified to $\geq 100,000$ double rubs
Covered by a full and comprehensive 10 year guarantee (full details available)

Flammability

California Technical Bulletin 117
NFPA 260 + UFAC Class 1
BS 7176 Medium Hazard
ASTM E84 Class 1 or A (Adhered)
ASTM E84 Class 2 or B (Un-adhered)
IMO FTP Code (Part 8)

Note: Flammability performance is dependent on components used.

Cleaning code

W/S

Clean with water-based cleaning agent or solvent: Depending on the stain, you can use a dry-cleaning solvent, the foam of a mild detergent, or upholstery shampoo.

Yoredale

Composition

95% Wool, 3% Polyester, 2% Nylon

Environmental

Certified to Indoor Advantage™ Gold
Environmental Product Declaration - Natural fabric
AB 2998 Compliant
Prop 65 Compliant
PFAS Free
Non metallic dyestuffs

Width

54 inches minimum

Abrasion Resistance*

ASTM D4157 Wyzenbeek method
Heavy Duty Upholstery independently certified to $\geq 50,000$ double rubs
Covered by a full and comprehensive 10 year guarantee (full details available)

Flammability

California Technical Bulletin 117
NFPA 260 + UFAC Class 1
BS 7176 Low Hazard
IMO FTP Code (Part 8)

Note: Flammability performance is dependent on components used.

Cleaning code

W/S

Clean with water-based cleaning agent or solvent: Depending on the stain, you can use a dry-cleaning solvent, the foam of a mild detergent, or upholstery shampoo.

camira

For additional information or sample requests visit: www.camirafabrics.com
Samples can also be requested by email at: memos@camirafabrics.com

