

Textile Catalogue



G R C ●

—
camira



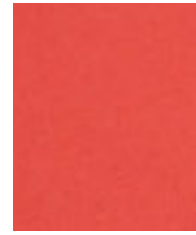
Magdalene
CUZ21



Wellington
CUZ13



Oriel
CUZ18



Leicester
CUZ4N



Leeds
CUZ4R



Moreton
CUZ3W



Handcross
CUZ63



Goldsmith
CUZ39



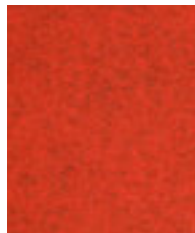
Felsted
CUZ3S



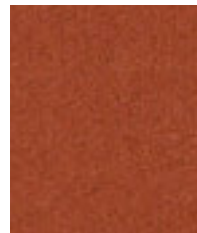
Wesley
CUZ82



Edge Hill
CUZ90



Tonbridge
CUZ3Q



Uplands
CUZ4U



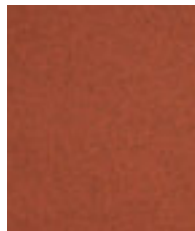
Malvern
CUZ3L



Earlscliffe
CUZ3T



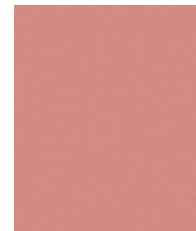
Dunalk
CUZ4D



Warwick
CUZ4L



Ackworth
CUZ3P



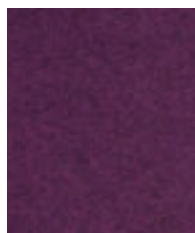
Derby
CUZ4Q



Padworth
CUZ3N



Sidcot
CUZ3V



Holyoke
CUZ2T



Chichester
CUZ4C



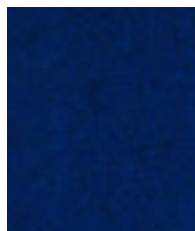
Moorlands
CUZ4T



Falmouth
CUZ4M



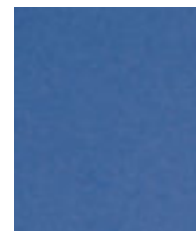
Oxford
CUZ09



Tettenhall
CUZ3X



Ellesmere
CUZ3Z



Manchester
CUZ1V



Perth
CUZ4H

Visit www.camirafabrics.com to view the full range of colors available in each pattern.
Photographic fabric scans are not color accurate. Always request actual fabric samples before ordering.



Edinburgh
CUZ1Y



Dundee
CUZ4P



Newcastle
CUZ1W



Norland
CUZ4J



Plymouth
CUZ1R



Glenalmond
CUZ6Z



Knightsbridge
CUZ26



Vassar
CUZ2U



Aston
CUZ0Z



Woodcroft
CUZ2Z



Hull
CUZ1P



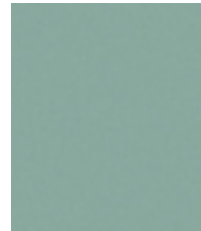
Brokenhurst
CUZ4B



Abertay
CUZ3B



Latymer
CUZ3Z



Ullswater
CUZ4S



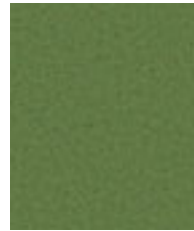
Bodmin
CUZ4F



Montcrest
CUZ3A



Heathfield
CUZ4V



Kingham
CUZ3U



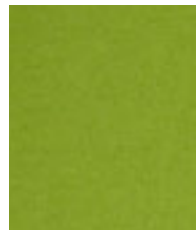
Moray
CUZ4K



Cardiff
CUZ1N



Ambleside
CUZ4G



Bryanston
CUZ5Z



Newport
CUZ1L



Eynesbury
CUZ2W



Oakham
CUZ3Y



Camphill
CUZ1K



Ulster
CUZ1F



Dunhurst
CUZ58

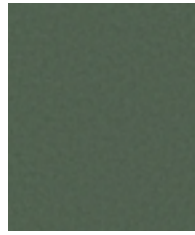


Lucton
CUZ3M

Visit www.camirafabrics.com to view the full range of colors available in each pattern.
Photographic fabric scans are not color accurate. Always request actual fabric samples before ordering.



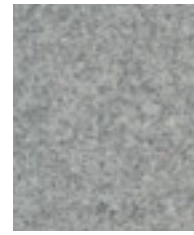
Grantham
CUZ4E



Stowe
CUZ3R



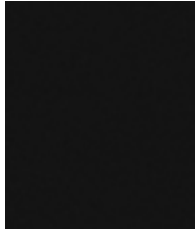
Aberlour
CUZ1J



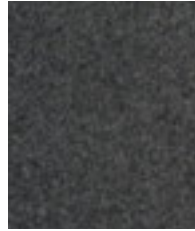
Surrey
CUZ1E



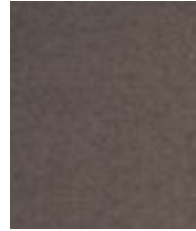
Silverdale
CUZ28



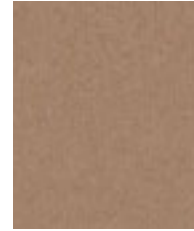
Napier
CUZ08



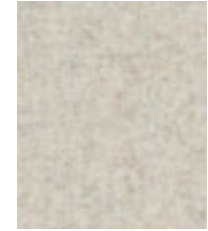
Silcoates
CUZ30



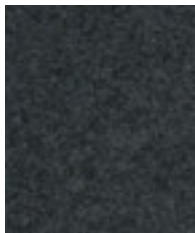
Trevelyan
CUZ31



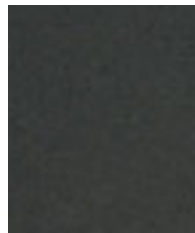
Bristol
CUZ4X



Dartmouth
CUZ2Q



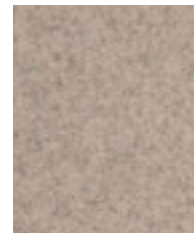
Bromsgrove
CUZ35



Winchester
CUZ12



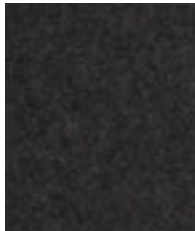
Caterham
CUZ4A



St Andrews
CUZ86



Fairfield
CUZ47



Kingsmead
CUZ67



Stonebridge
CUZ4W

Made from premium New Zealand lambswool, Blazer is a timeless wool felt fabric which embodies everything we do: we spin the yarn, weave the cloth, mill the fabric and dye it into our most extensive palette of 77 colorways.

Sustainable, natural,
renewable.

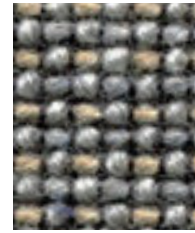




Esker
CRA21



Marsh
CRA04



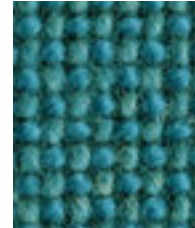
Gravel
CRA08



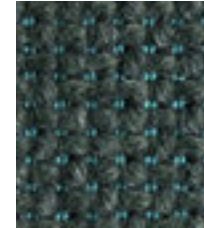
Scree
CRA10



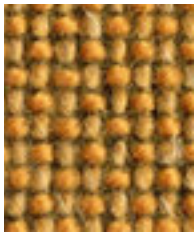
Brae
CRA20



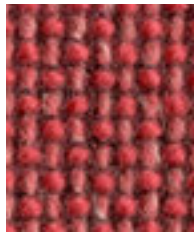
Loch
CRA19



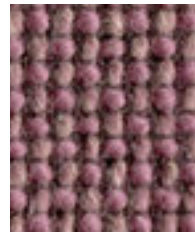
Cave
CRA06



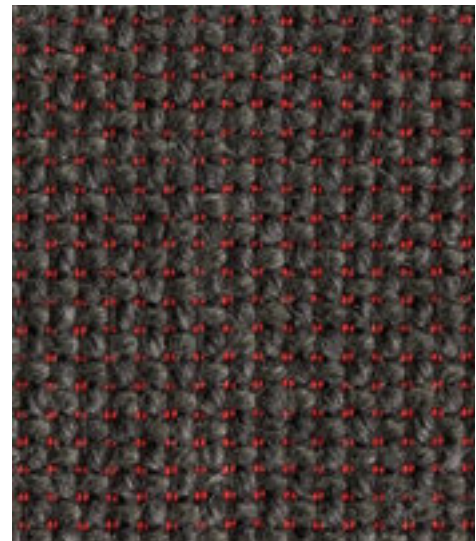
Knoll
CRA11



Talus
CRA14



Wold
CRA15



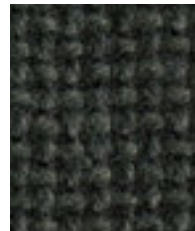
Millstone
CRA07



Bracken
CRA03



Drumlin
CRA12



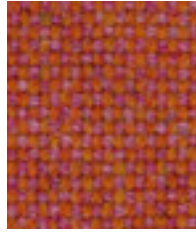
Swale
CRA09



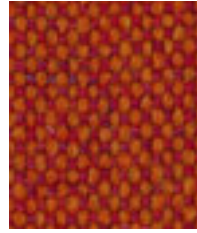
Deeply textured and thickly woven, Craggan Flax is crafted from a blend of wool and flax. This sustainable fabric retains the raw appeal of its natural composition, while possessing the contemporary aesthetic of a chunky weave to provide an element of stylized texture.



Barking
MLF45



Balham
MLF44



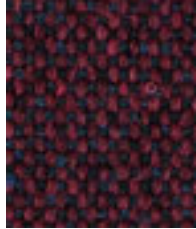
Leyton
MLF13



Lambeth
MLF08



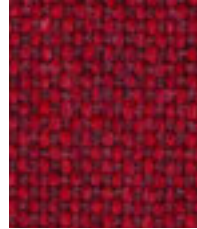
Alperton
MLF43



Northfields
MLF40



Blackwall
MLF46



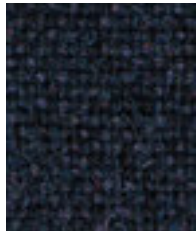
Parsons
MLF14



Kilburn
MLF06



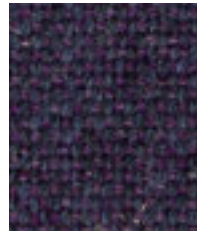
Aldgate
MLF01



Tower
MLF36



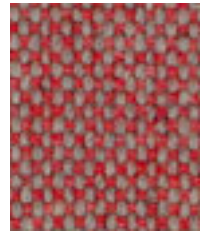
Embankment
MLF50



Chigwell
MLF48



Brixton
MLF47



Barbican
MLF03



Victoria
MLF19



Brompton
MLF35



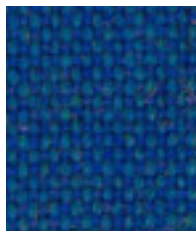
Clapham
MLF49



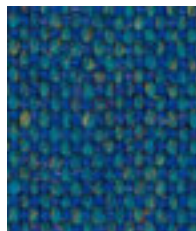
Epping
MLF51



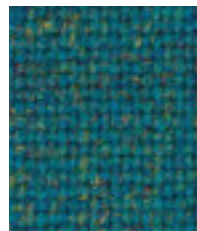
Waterloo
MLF21



Holborn
MLF05



Pimlico
MLF34



Stanmore
MLF37



Bayswater
MLF24



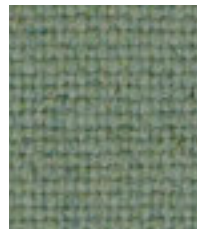
Westminster
MLF22



Harrow
MLF54



Bethnal
MLF25



Greenwich
MLF52



Monument
MLF09



Newbury
MLF10

Visit www.camirafabrics.com to view the full range of colors available in each pattern.
Photographic fabric scans are not color accurate. Always request actual fabric samples before ordering.



Hornchurch
MLF55



Hampstead
MLF53



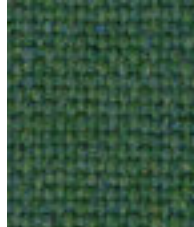
Greenford
MLF32



Moorgate
MLF57



Tufnell
MLF18



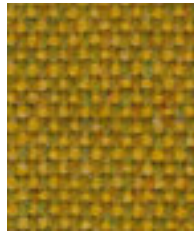
Farringdon
MLF29



Kentish
MLF56



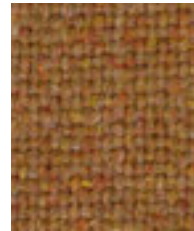
Woodford
MLF67



Goldhawk
MLF31



Tooting
MLF17



Perivale
MLF59



Stockwell
MLF15



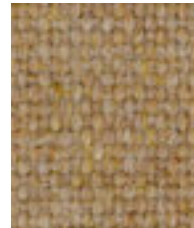
Kensington
MLF07



Upminster
MLF20



Morden
MLF12



Pinner
MLF60



Bank
MLF23



Archway
MLF02



Redbridge
MLF61



Camden
MLF26



Richmond
MLF62



Temple
MLF16



Shadwell
MLF63



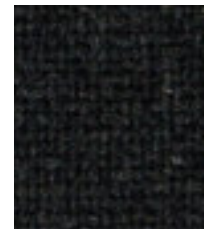
Stratford
MLF64



Watford
MLF65

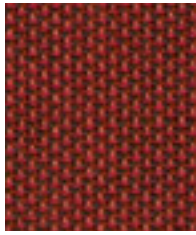


Whitechapel
MLF66

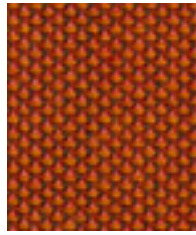


Edgware
MLF28

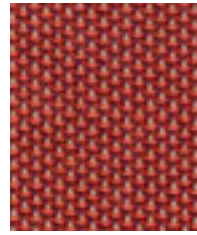
Visit www.camirafabrics.com to view the full range of colors available in each pattern.
Photographic fabric scans are not color accurate. Always request actual fabric samples before ordering.



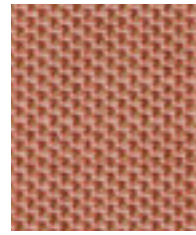
Pigment
PEN31



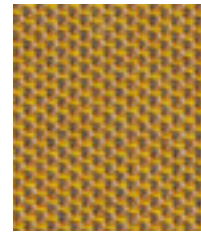
Dominant
PEN33



Radiance
PEN28



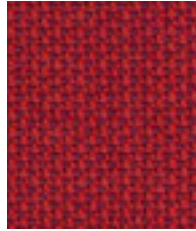
Marble
PEN29



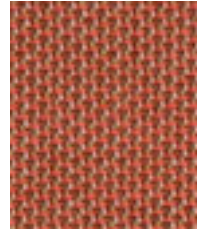
Glow
PEN19



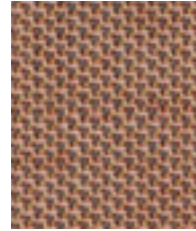
Visual
PEN27



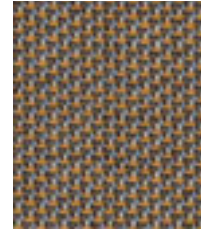
Chroma
PEN32



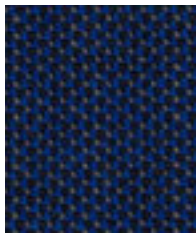
Paint
PEN30



Diad
PEN18



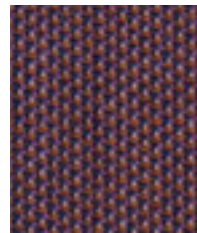
Optic
PEN24



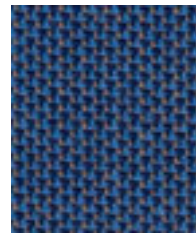
Saturation
PEN06



Iris
PEN25



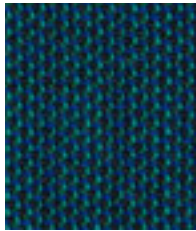
Wheel
PEN26



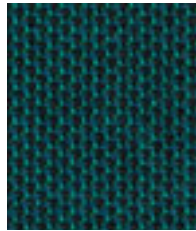
Prism
PEN03



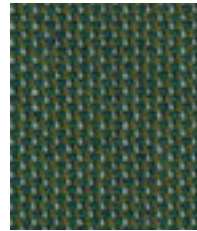
Gamut
PEN01



Spectral
PEN09



Newton
PEN10



Geothe
PEN11

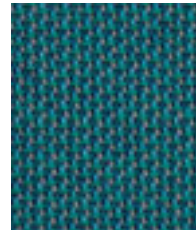
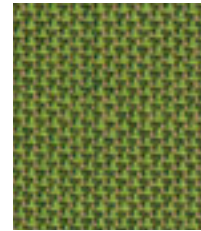


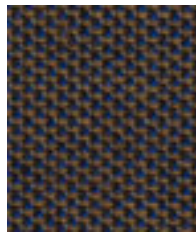
Chart
PEN02



Bright
PEN08



Intensity
PEN07



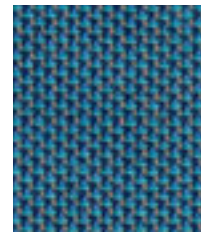
Harlequin
PEN05



Tincture
PEN14



Hint
PEN16



Tempera
PEN04



Shade
PEN13



Dark
PEN12



Purity
PEN23



Trace
PEN22



Light
PEN20

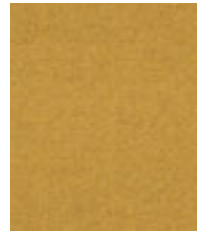
Visit www.camirafabrics.com to view the full range of colors available in each pattern.
Photographic fabric scans are not color accurate. Always request actual fabric samples before ordering.



Marry
LDS43



Relate
LDS44



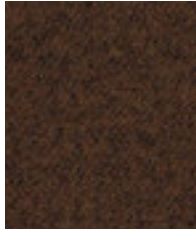
Lateral
LDS28



Summon
LDS45



Bracket
LDS23



Collective
LDS39



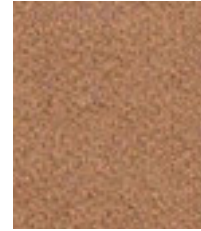
Linea
LDS37



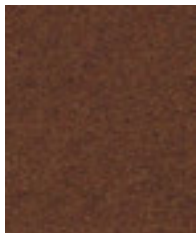
Success
LDS76



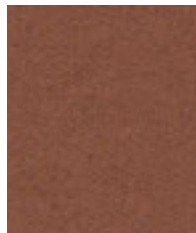
Frame
LDS22



Loop
LDS18



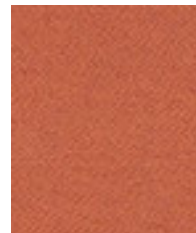
Cordial
LDS78



Combo
LDS77



Work
LDS73



Contribution
LDS75



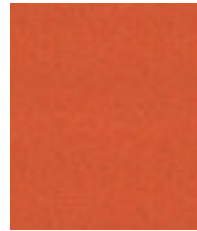
Affinity
LDS74



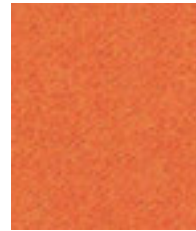
Global
LDS86



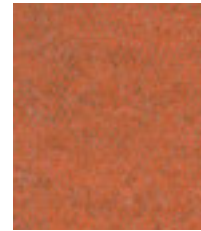
Mutual
LDS84



Similar
LDS81



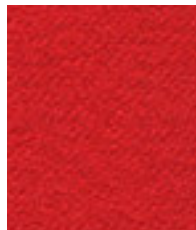
Likeness
LDS82



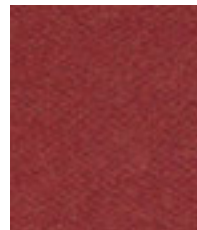
Congregate
LDS83



Open
LDS71



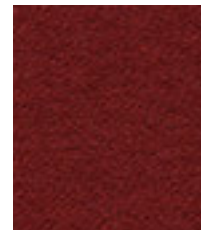
Apt
LDS80



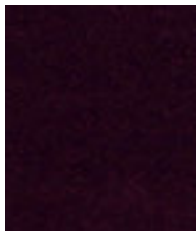
Share
LDS85



Values
LDS87



Amiable
LDS79



Process
LDS88



Together
LDS70



Medley
LDS36

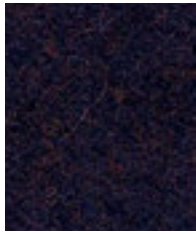


Compose
LDS72



Fate
LDS07

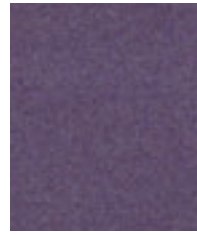
Visit www.camirafabrics.com to view the full range of colors available in each pattern.
Photographic fabric scans are not color accurate. Always request actual fabric samples before ordering.



Assemble
LDS61



Collaborate
LDS68



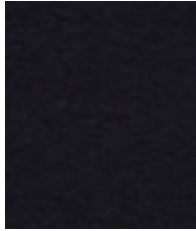
Warmth
LDS67



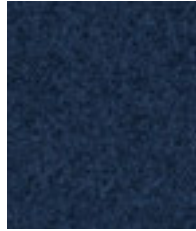
Fellowship
LDS66



Venture
LDS05



Sync
LDS69



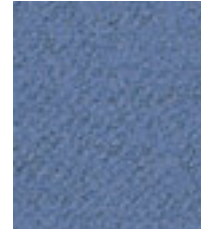
Alike
LDS62



Guild
LDS63



Order
LDS64



Huddle
LDS65



Unity
LDS38



Family
LDS58



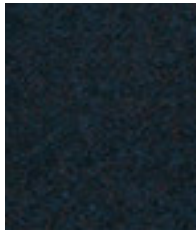
Engage
LDS57



Kinship
LDS56



Support
LDS55



Accord
LDS60



Group
LDS59



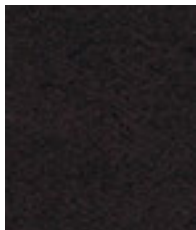
League
LDS50



Kindness
LDS51



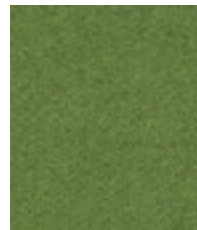
Comply
LDS52



Bridge
LDS26



Couple
LDS41



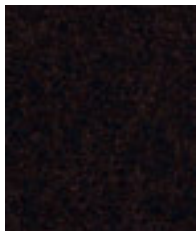
Integrate
LDS47



Pact
LDS53



Regard
LDS54



Co-operate
LDS40



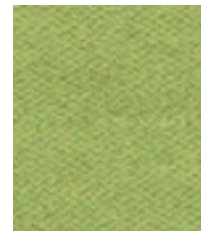
Intertwine
LDS42



Append
LDS49



Interfuse
LDS48



Gather
LDS46

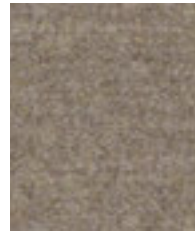
Visit www.camirafabrics.com to view the full range of colors available in each pattern.
Photographic fabric scans are not color accurate. Always request actual fabric samples before ordering.



Wed
LDS34



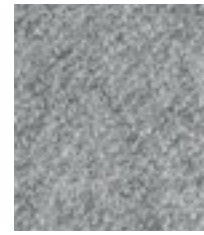
Tag
LDS33



Affix
LDS32



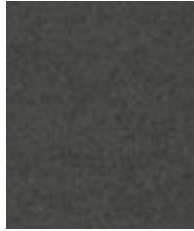
Chain
LDS19



Serendipity
LDS08



Mix
LDS17



Hook
LDS29



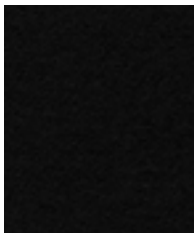
Chemistry
LDS35



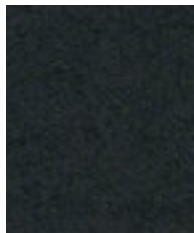
Partner
LDS16



Team
LDS21



Seek
LDS27



Compound
LDS25



Bond
LDS24



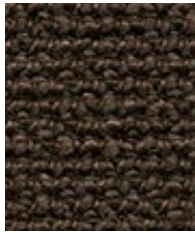
Pair
LDS31



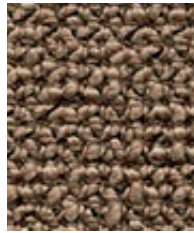
Level
LDS20

Epitomising natural simplicity, Synergy is a wool rich fabric which is at once both irresistibly soft and ultra-high performing. Delicately felted, with a beautifully relaxed drape, the understated aesthetics showcase the intriguing coloration of this considered textile. Featuring exquisite fiber dyed shades and sumptuous piece dyed solids within its palette of 75 colorways, there truly is a tone for every scheme.





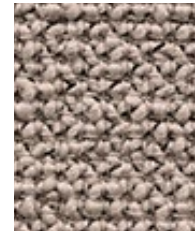
Thoraby
UDA06



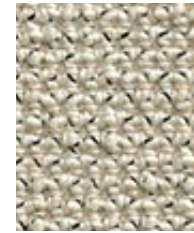
Caperby
UDA07



Settle
UDA36



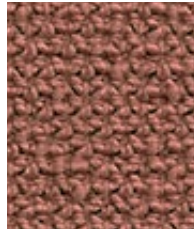
Kidstone
UDA02



Gordale
UDA29



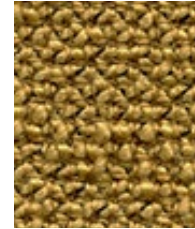
Ilkley
UDA31



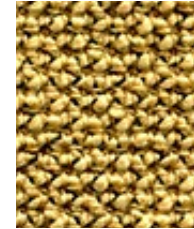
Kettlewell
UDA33



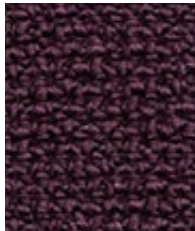
Horton
UDA30



Wharfe
UDA18



Simonstone
UDA05



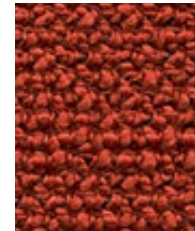
Swaledale
UDA38



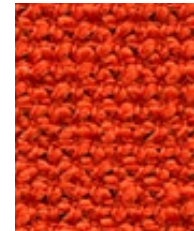
Skipton
UDA37



Sedbusk
UDA14



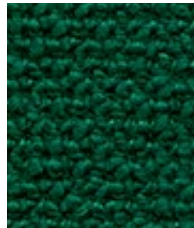
Walden
UDA13



Askrigg
UDA03



Gayle
UDA08



Thornton
UDA09



Ingleton
UDA32



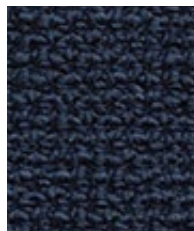
Bronte
UDA28



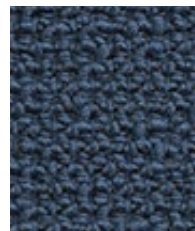
Grassington
UDA27



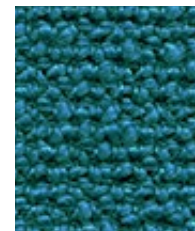
Fossdale
UDA11



Marsden
UDA35



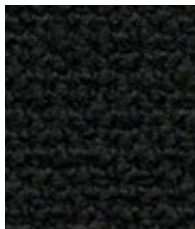
Malham
UDA34



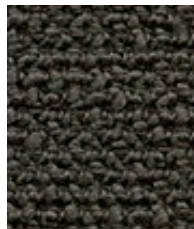
Darley
UDA20



Cracoe
UDA23



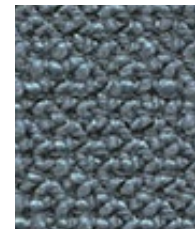
Buckden
UDA01



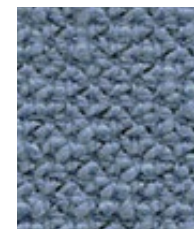
Leyburn
UDA25



Hadraw
UDA04



Burnsall
UDA22



Dacre
UDA21

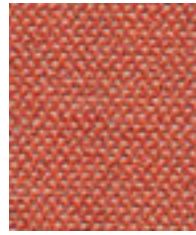
Visit www.camirafabrics.com to view the full range of colors available in each pattern.
Photographic fabric scans are not color accurate. Always request actual fabric samples before ordering.



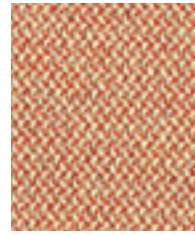
Extent
CSE28



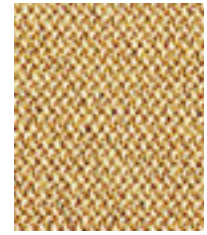
Experience
CSE29



Turn
CSE26



Sequence
CSE25



Splitsecond
CSE31



Prime
CSE09



Phase
CSE17



Occurence
CSE23



Date
CSE24



Calendar
CSE19



Signature
CSE35



Timelapse
CSE16



Event
CSE18



Rest
CSE37



Endurance
CSE34



Maturity
CSE40



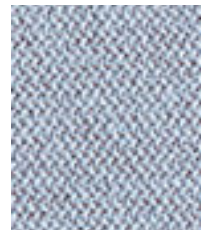
Range
CSE42



Chapter
CSE08



Aeon
CSE20



Youth
CSE39



History
CSE21



Generation
CSE02



Prompt
CSE45



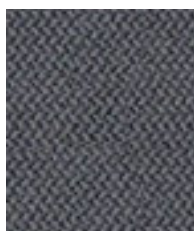
Futurist
CSE01



Transition
CSE30



Forward
CSE14



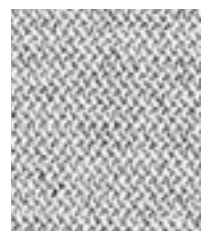
Present
CSE13



Forecast
CSE11



Quota
CSE41



Memo
CSE46

Visit www.camirafabrics.com to view the full range of colors available in each pattern.
Photographic fabric scans are not color accurate. Always request actual fabric samples before ordering.



Coral
OOC05



Seafarer
OOC16



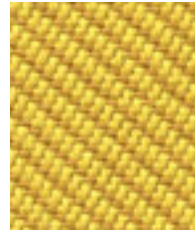
Paddle
OOC13



Abyss
OOC10



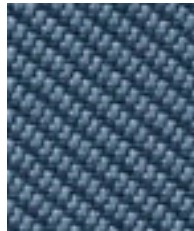
Aquatic
OOC12



Barrier
OOC07



Atoll
OOC06



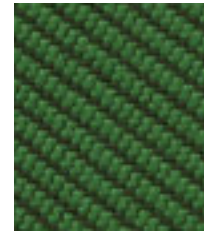
Neptune
OOC11



Jetsam
OOC02



Sea
OOC04



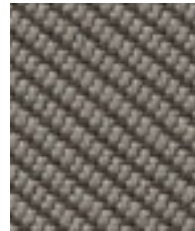
Coast
OOC03



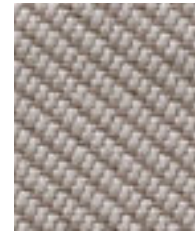
Flotsam
OOC01



Shore
OOC09



Bay
OOC08



Riptide
OOC14



Gulf
OOC15



Oceanic is a fabric born of the SEAQUAL INITIATIVE designed to combat marine plastic pollution and achieve a waste free environment.

It is created entirely from post-consumer recycled plastic - from plastic debris floating in our seas, used to make SEAQUAL® YARN, to bottles thrown away and destined for landfills.



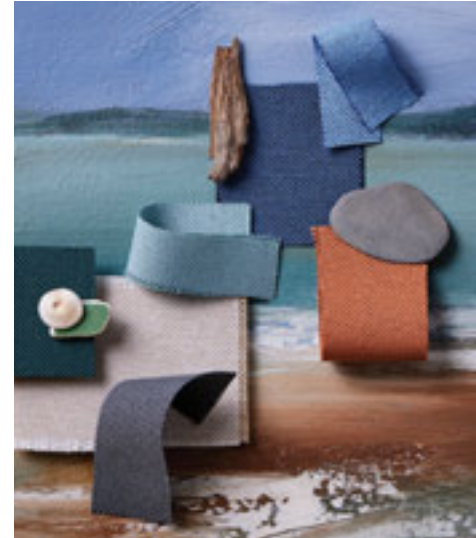
Sandstone
QUE20



Beach Comber
QUE21



Salt
QUE22



Crab
QUE24



Clay
QUE25



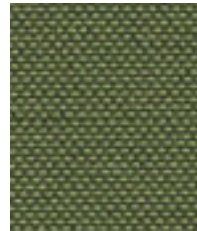
Shrimp
QUE26



Kelp
QUE15



Algae
QUE14



Abalone
QUE18



Sea Grass
QUE13



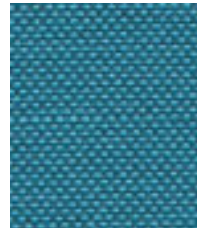
Urchin
QUE17



Whelk
QUE08



Limpet
QUE09



Wave
QUE11



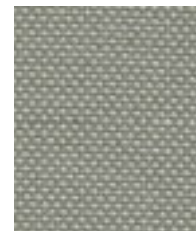
Tide
QUE12



Ripple
QUE07



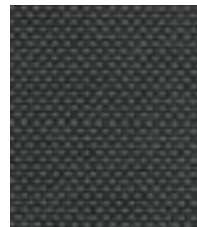
Pebble
QUE27



Fossil
QUE02



Driftwood
QUE19



Mussel
QUE04

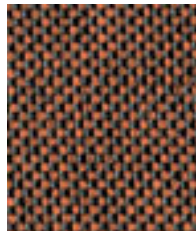


Shell
QUE06

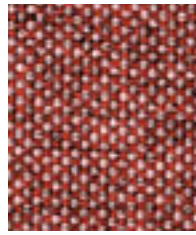


Barnacle
QUE03

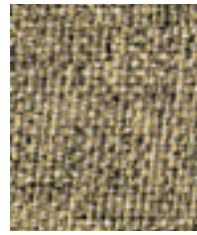
Visit www.camirafabrics.com to view the full range of colors available in each pattern. Photographic fabric scans are not color accurate. Always request actual fabric samples before ordering.



Deep Clay
EGL32



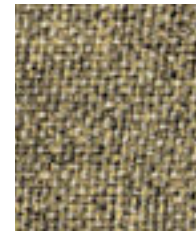
Forge
EGL12



Molten
EGL09



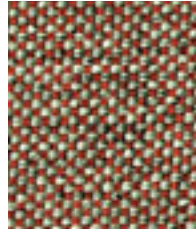
Vitreous
EGL01



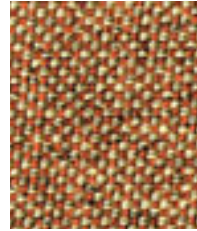
Wire
EGL03



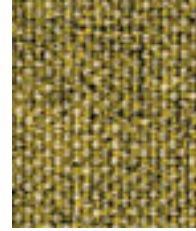
Woodrose
EGL33



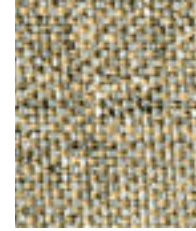
Abraid
EGL13



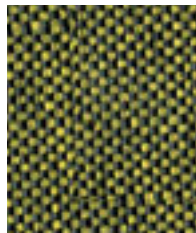
Copper
EGL14



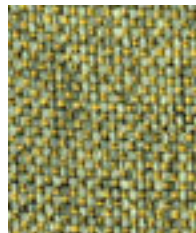
Spark
EGL10



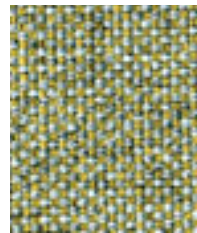
Resin
EGL04



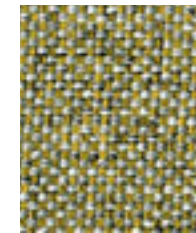
Olive
EGL31



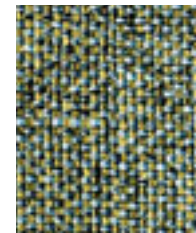
Tungsten
EGL07



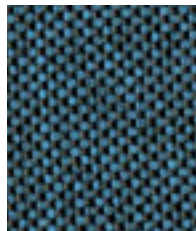
Burnish
EGL11



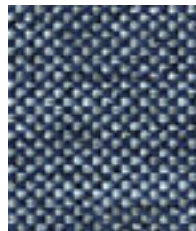
Alloy
EGL05



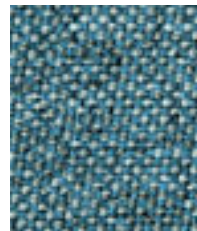
Chromoly
EGL19



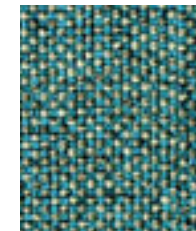
Lagoon
EGL35



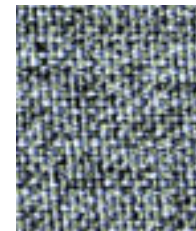
Crucible
EGL24



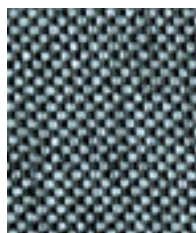
Quench
EGL23



Verdigris
EGL21



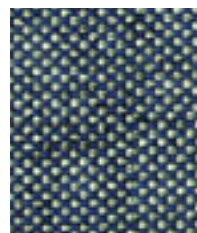
Tensile
EGL20



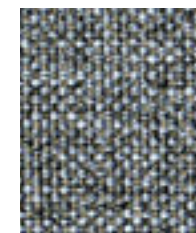
Deep Sea
EGL48



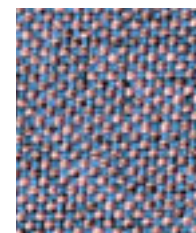
Grey Brindle
EGL50



Hammer
EGL27



Solder
EGL18



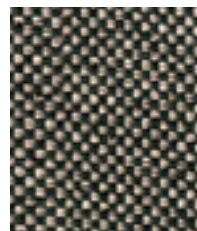
Fuse
EGL08



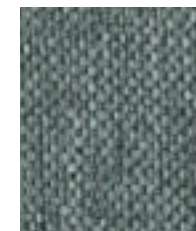
Charcoal
EGL37



Otter
EGL36



Twig
EGL49



Galvanise
EGL26



Prime
EGL16

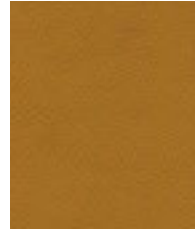
Visit www.camirafabrics.com to view the full range of colors available in each pattern.
Photographic fabric scans are not color accurate. Always request actual fabric samples before ordering.



Arcadia
POT20



Ferrysburg
POT17



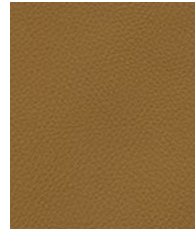
Marquette
POT16



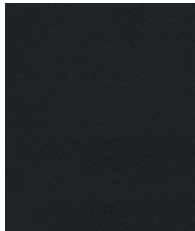
Monroe
POT19



Manitou
POT18



Copper
POT13



Alpena
POT10



Bay
POT09



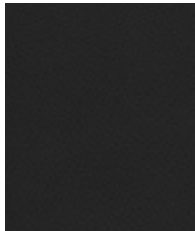
Boyne
POT07



Caseville
POT06



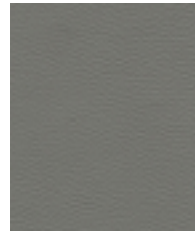
Mackinaw
POT08



Escanaba
POT04



Isle Royale
POT05



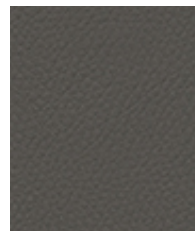
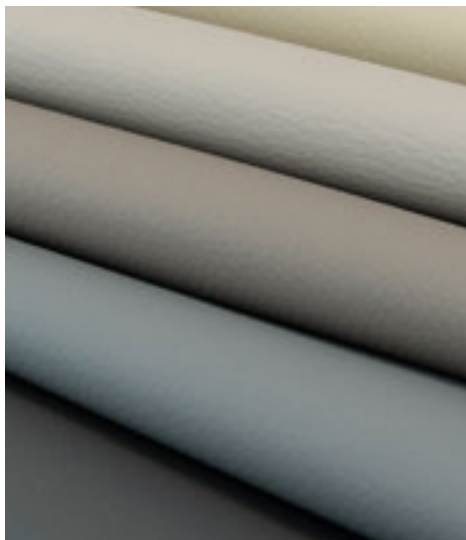
Cheboygan
POT22



Pentwater
POT03



Grayhaven
POT02



Petoskey
POT15



Leland
POT01



Ludington
POT11



Charlevoix
POT14



Manistee
POT21



Saugatuck
POT12

Visit www.camirafabrics.com to view the full range of colors available in each pattern. Photographic fabric scans are not color accurate. Always request actual fabric samples before ordering.



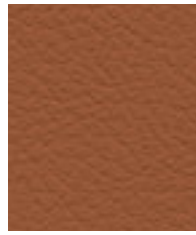
Stag
VIN38



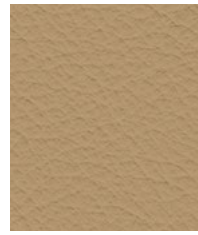
Morgan
VIN46



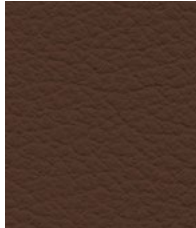
Pontiac
VIN71



Cursor
VIN53



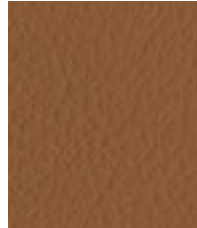
Limousine
VIN06



Camargue
VIN12



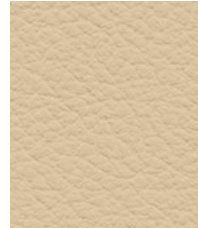
Media
VIN98



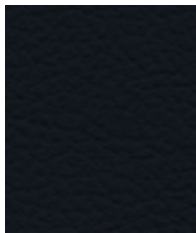
Phantom
VIN10



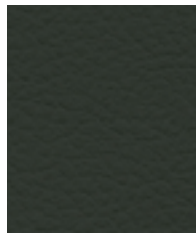
Innovate
VIN93



Pinto
VIN22



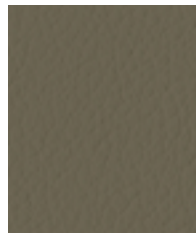
Bugatti
VIN84



Connaught
VIN07



Acura
VIN86



Maybach
VIN58



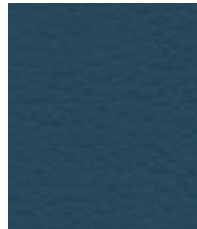
Cobra
VIN85



Aston
VIN18



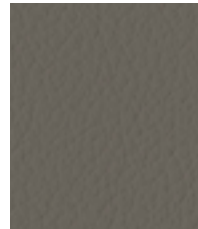
Thunderbird
VIN51



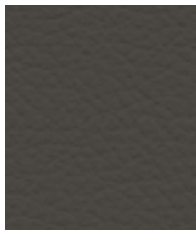
Spyder
VIN28



Royce
VIN24



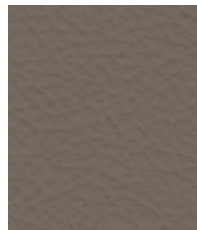
Rambler
VIN23



Lincoln
VIN27



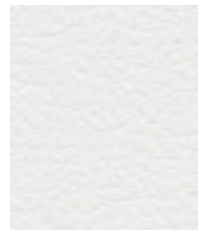
Cache
VIN96



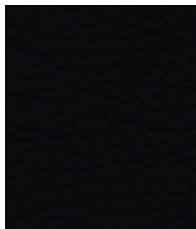
Novel
VIN97



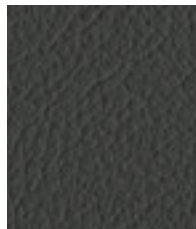
Javelin
VIN56



Sprite
VIN50



Seraph
VIN01



Silver Shadow
VIN02



Cache
VIN96

Visit www.camirafabrics.com to view the full range of colors available in each pattern.
Photographic fabric scans are not color accurate. Always request actual fabric samples before ordering.

Technical Information

Product	Composition	Width Inches	Abrasion Resistance	Flammability
Blazer	100% Pure New Wool	54	≥75,000 double rubs ASTM D4157 Wyzenbeek Method	California Technical Bulletin 117 NFPA 260 + UFAC Class 1 ASTM E84 Class 1 or A (Adhered) ASTM E84 Class 1 or A (Un-adhered) IMO FTP Code (Part 8) With FR Treatment (Z): NFPA 701
Craggan Flax	85% Wool, 10% Flax, 5% Nylon	54	≥100,000 cycles D4966 Martindale Method	California Technical Bulletin 117 NFPA 260 + UFAC Class 1 ASTM E84 Class 1 or A (Adhered) ASTM E84 Class 2 or B (Un-adhered) IMO FTP Code (Part 8)
Era	100% Polyester	54	≥100,000 double rubs ASTM D4157 Wyzenbeek Method	California Technical Bulletin 117 NFPA 260 + UFAC Class 1 ASTM E84 Class 1 or A (Adhered) ASTM E84 Class 1 or A (Un-adhered) UL 723 With FR Treatment(Gorts): NFPA 701
Main Line Flax	75% Pure New Wool, 25% Flax	54	≥100,000 double rubs ASTM D4157 Wyzenbeek Method	California Technical Bulletin 117 NFPA 260 + UFAC Class 1 ASTM E84 Class 1 or A (Adhered) ASTM E84 Class 2 or B (Un-adhered) IMO FTP Code (Part 8)
Oceanic	100% post-consumer recycled polyester, including 50% SEAQUAL® yarn	54	≥100,000 double rubs ASTM D4157 Wyzenbeek Method	California Technical Bulletin 117 ASTM E84 Class 1 or A (Un-adhered) With FR Treatment(Gorts): NFPA 701
Penta	90% Wool, 10% Nylon	54	≥70,000 cycles D4966 Martindale Method	California Technical Bulletin 117 NFPA 260 + UFAC Class 1 IMO FTP Code (Part 8) With FR Treatment (Z): ASTM E84 Class 1 or A (Adhered) ASTM E84 Class 1 or A (Un-adhered)
Port	Face: ≥99% PVC, ≤1% PU. Backing: 100% Polyester	54	≥100,000 double rubs ASTM D4157 Wyzenbeek Method	California Technical Bulletin 117 NFPA 260 + UFAC Class 1
Quest	100% post-consumer recycled polyester, including 75% SEAQUAL® YARN	54	≥100,000 double rubs ASTM D4157 Wyzenbeek Method	California Technical Bulletin 117 NFPA 260 + UFAC Class 1 ASTM E84 Class 1 or A (Adhered) ASTM E84 Class 1 or A (Un-adhered) With FR Treatment(Gorts): NFPA 701
Rivet	100% Post Consumer Recycled Polyester	54	≥50,000 double rubs ASTM D4157 Wyzenbeek Method	California Technical Bulletin 117 NFPA 260 + UFAC Class 1 ASTM E84 Class 2 or B (Adhered) ASTM E84 Class 1 or A (Un-adhered) UL 723 With FR Treatment(Gorts): NFPA 701
Synergy	95% Pure New Wool, 5% Nylon	54	≥100,000 cycles D4966 Martindale Method	California Technical Bulletin 117 NFPA 260 + UFAC Class 1 ASTM E84 Class 2 or B (Adhered) ASTM E84 Class 2 or B (Un-adhered) IMO FTP Code (Part 8) With FR Treatment (Z): ASTM E84 Class 1 or A (Adhered) NFPA 701
Vintage	100% Leather	-	≥100,000 double rubs ASTM D4157 Wyzenbeek Method	California Technical Bulletin 117 NFPA 260 + UFAC Class 1
Yoredale	95% Wool, 3% Polyester, 2% Nylon	54	≥50,000 cycles D4966 Martindale Method	California Technical Bulletin 117 NFPA 260 + UFAC Class 1 IMO FTP Code (Part 8)

*Abrasion test results exceeding ACT performance Guidelines are not an indicator of product lifespan. Multiple factors affect fabric durability and appearance retention. We're confident in the durability of our products so we provide a robust 10 year guarantee. Port and Vintage are covered by a 5 year guarantee (full details available). This product is externally certified, details of which are on our website and available from our customer services team.

Batch to batch variations in shade may occur within commercial tolerances. We reserve the right to alter technical specifications without notice. The Unregistered Design Rights and the Copyright in all designs are the exclusive property of Camira Fabrics Limited.

The stated technical and environmental performance of a fabric may be affected by the post treatment applied. Product guarantees for the post treatment of fabrics undertaken by Camira are guaranteed for 5 years.

camira

For additional information or sample requests visit: www.camirafabrics.com
Samples can also be requested by email at: memos@camirafabrics.com

